

# LiftSeat™ Home Care Pre-Installation Check List

Fax to (630) 672-7778 if you have any questions

For each bathroom requiring installation of the LiftSeat toilet lift, please complete the Pre-Installation Check List and fax to (630) 672-7778 prior to ordering the product.

The Pre-Installation Check List validates a proper fit of the LiftSeat and identifies any potential obstacles that would cause installation problems. Please call LiftSeat Customer Service at 877-665-4381 with any questions.

## Confirmation of Toilet Dimensions

**D1 =** \_\_\_\_\_ (Smallest allowable value = 14 inches. If less, contact LiftSeat.)

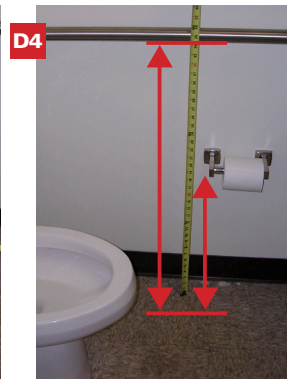
**D2 =** \_\_\_\_\_ (Smallest allowable value = 14 inches. If less, contact LiftSeat.)

Obstruction (toilet tissue holder, grab bar, etc.) \_\_\_\_\_ **Y/N?** Is obstruction removable? \_\_\_\_\_ **Y/N?**

**D3-1 =** \_\_\_\_\_ If obstruction, distance from front of toilet bowl to obstruction.

**D3-2 =** \_\_\_\_\_ From center of toilet to the wall obstruction, i.e., grab bar. If obstruction to center point of toilet is less than 14 inches, contact LiftSeat.

**D4=** \_\_\_\_\_ Height of obstruction from floor.



**D5=** \_\_\_\_\_ Distance from toilet to floor (not including toilet seat)

**D6 =** \_\_\_\_\_ Width at widest part of toilet bowl



**D7 =** \_\_\_\_\_ Width of porcelain where the mounting holes for a toilet seat are located

**D8=** \_\_\_\_\_ Distance from water tank to front inside rim of toilet bowl (if less than 19 inches, contact LiftSeat)

Is the toilet bowl elongated or non-elongated? \_\_\_\_\_

Weight and height of all who will be using LiftSeat? \_\_\_\_\_

Is a Ground Fault Interrupted (GFI) outlet currently located near the toilet? \_\_\_\_\_

**Questions?  
Call toll-free:  
877-665-4381**



**LiftSeat®**  
toilet transfer solutions™