

NEW & IMPROVED PUMP & CRADLE



13010SV with Sling
(Sold Separately)



NEW & IMPROVED PUMP

13023 with Sling
(Sold Separately)

CAN FIT UNDER LOW BED WITH 3" CASTER KIT (SOLD SEPARATELY)

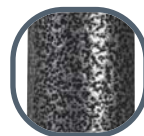
Hydraulic, Standard Patient Lift with Six Point Cradle

13010SV (Has replaced the 13010), 1/cs

FEATURES:

- 6 point cradle design.
- Safely raises or lowers individuals from any stationary position.
- Silver vein finish is attractive and durable.
- High performance hydraulics raises or lowers individuals gradually and safely.
- Easy to operate caster brakes provide additional safety.
- Adjustable width base.
- Includes sling chains.
- Limited Lifetime Warranty (frame).
- 1 Year Limited Warranty (pump).

COMPARE TO:
drive Hoyer/Joerns®
13010SV HML400



SILVER VEIN FINISH
EASY TO MAINTAIN
& LESS INSTITUTIONAL LOOKING!

COMPARE TO:
drive Hoyer/Joerns® Brewer®
13023 C-HCA 9805

Hydraulic, Deluxe Chrome Plated Patient Lift with Six Point Cradle

13023 (Has replaced the 13010), 1/cs
13023CSET 3" Casters (For use with Low Bed), Contains Two 3" Non-locking Caster and Two 3" Locking Caster, 4/bx

Low Hydraulic, Standard Patient Lift with Six Point Cradle (For use under Low Bed)

13023SVKIT Includes 13023SV and (4) 3" Casters (Two with locks, two without locks), 1set/cs

FEATURES:

- Chrome-plated steel construction provides maximum strength.
- 6 point cradle design.
- Safely raises or lowers individuals from any stationary position.
- High performance hydraulics raise or lower individuals gradually and safely.
- Easy to operate caster brakes provide additional security.
- Adjustable width base.
- Includes sling chains.
- Limited Lifetime Warranty (frame).
- 1 Year Limited Warranty (pump).

REFER TO PAGE 182-190 FOR LIFT ACCESSORIES AND SLINGS.

SPECIFICATIONS

Item #	Boom Maximum Height	Boom Minimum Height	Base Width (open)	Base Width (closed)	Base Height	Castors	Product Weight	Carton Shipping Weight	Weight Limit
13010SV	72"	21"	43"	23"	5.5"	4"	87 lbs.	95 lbs.	450 lbs.
13023	81"	24"	42"	22.5"	6"	5"	85 lbs.	93 lbs.	450 lbs.

*(Not endorsed or authorized by Invacare® or Joerns®.)

Important Notice: Item numbers that display an asterisk () reflect an item that will be discontinued or package change.