

**TRUS-T-LIFT DIMENSIONS**

JOB No.	TOTAL TRAVEL	INCHES	No. OF LANDINGS
	120 [3048]	mm	2

LOCATION UNENCLOSED COMMERCIAL TRUS<T>LIFT  
SAMPLE DRAWING

ARCHITECT

GENERAL CONTRACTOR

**SPECIFICATIONS:**

- 34" x 54" [864 mm x 1372 mm] LIFT PLATFORM
- 48" x 54" [1219 mm x 1372 mm] FOOTPRINT
- 142" [3607] HEIGHT
- 0" - 120" [0mm - 3048 mm] LIFT RANGE
- MAXIMUM LOAD 550 lbs [250 kg].
- 8 FEET/MINUTE [2.4 METRES/MINUTE] LIFT SPEED
- SCREW NUT WORM GEAR DRIVE
- MOTOR: 1/2 H.P. 110V A.C.
- POWER SUPPLY: 110V/1PH/60HZ C/W 15A FUSED DISCONNECT
- NON-LOAD BEARING BACKUP SAFETY NUT ON LIFT SHAFT
- SAFETY HANDRAIL ON CARRIAGE
- ZERO-LOAD START IN BOTTOM POSITION
- SOLID DECK WITH UNDER PLATFORM SAFETY PLATE
- UPPER GATE C/W INTERLOCK

<input type="checkbox"/> Accepted as Shown
<input type="checkbox"/> Revise and Resubmit
<input type="checkbox"/> Accepted as Modified
Date: _____
Per: _____

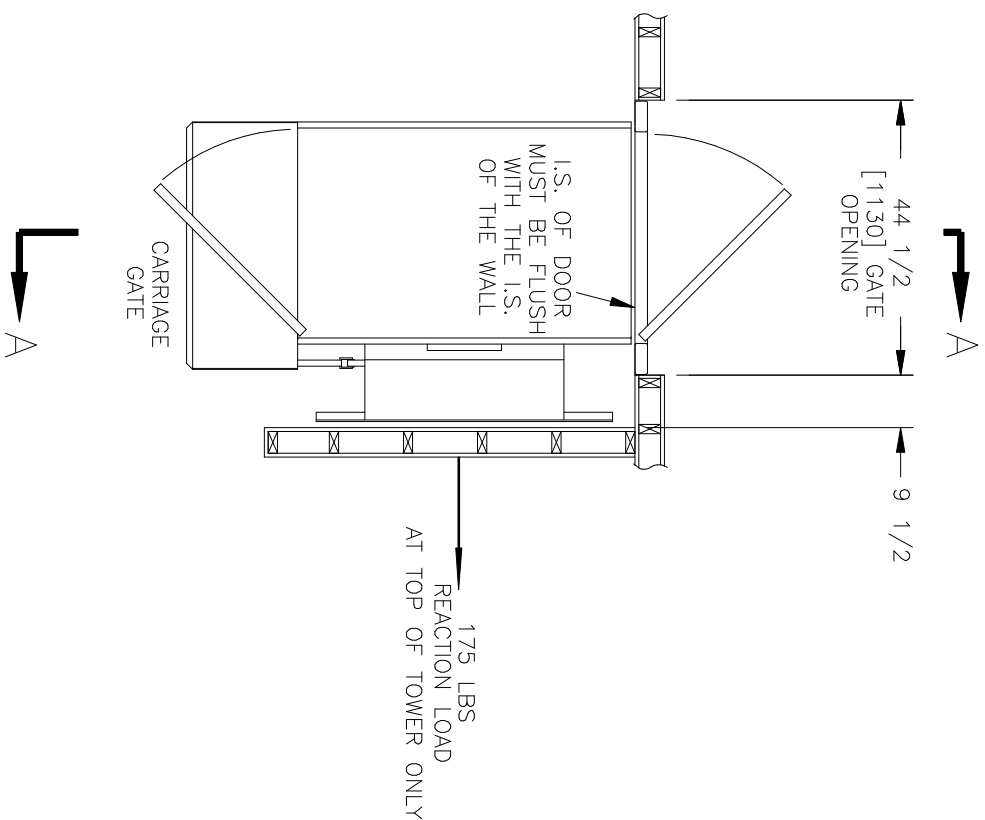
**NOTES:**

- Dimensions are in inches and [mm]
- Designed and built to meet ANSI-A17.1 PART XX Safety Code



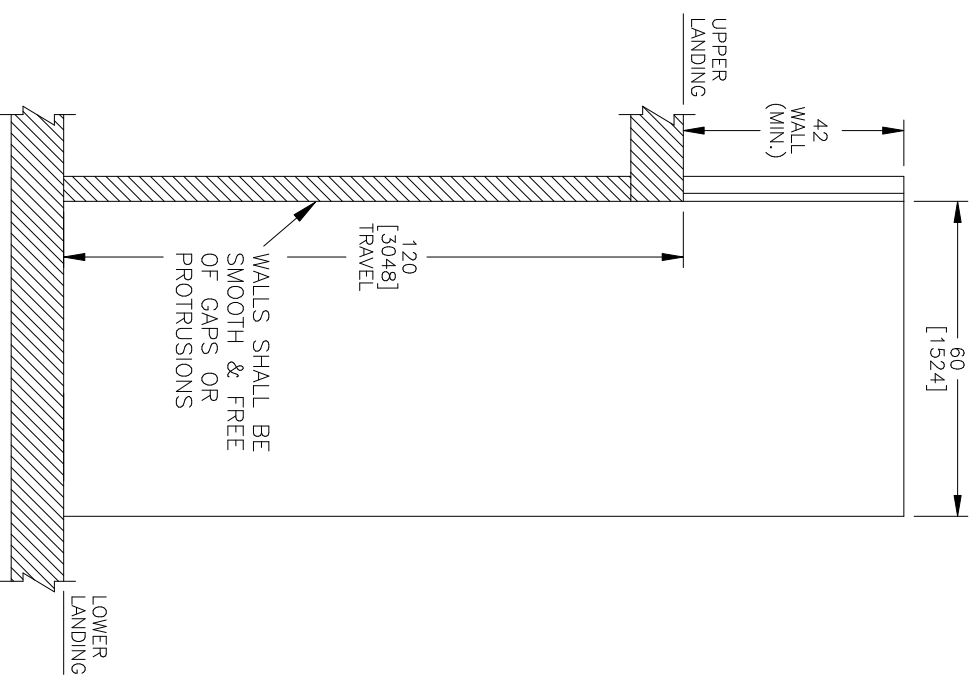
DWN. BY: B. HANNAH  
CHECKED BY: \_\_\_\_\_  
TRUS-T-LIFT ELEVATOR  
INSTALLATION DETAILS  
AND SPECIFICATIONS

SCALE: N.T.S. DATE: 17/12/03 DRAWING No. T1-A-1200CRJ03C 1/2 REV A



PLAN VIEW SECTION

SECTION A-A

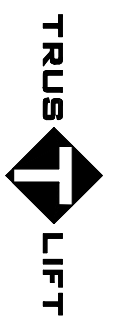


JOB No.	S120	TOTAL TRAVEL	120 [3048]	INCHES	No. OF LANDINGS	2
---------	------	--------------	------------	--------	-----------------	---

LOCATION UNENCLOSED COMMERCIAL TRUS-T-LIFT  
SAMPLE DRAWING

ARCHITECT

GENERAL CONTRACTOR



DWN. BY: B. HANNAH  
CHECKED BY:

TRUS-T-LIFT ELEVATOR  
INSTALLATION DETAILS  
AND SPECIFICATIONS

SCALE:	N.T.S.	DATE:	17/12/03	DRAWING No.	T1-A-120URUNC 2/2	REV	A
--------	--------	-------	----------	-------------	-------------------	-----	---