

TRUS-T-LIFT DIMENSIONS

TOTAL TRAVEL	28	INCHES	No. OF LANDINGS	2
--------------	----	--------	-----------------	---

LOCATION UNENCLOSED TRUS<T>LIFT ADJACENT ACCESS WITH CARRIAGE GATE SAMPLE INSTALLATION

ARCHITECT

GENERAL CONTRACTOR

SPECIFICATIONS:

- 34" x 54" [864 mm x 1372 mm] LIFT PLATFORM
- 48" x 54" [1219 mm x 1372 mm] FOOTPRINT
- 48" HEIGHT
- 0" - 28" LIFT RANGE
- MAXIMUM LOAD 550 lbs [250 kg].
- 8 FEET/MINUTE [2.4 METRES/MINUTE] LIFT SPEED
- SCREW NUT WORM GEAR DRIVE
- MOTOR: 1/2 H.P., 110V A.C.
- POWER SUPPLY: 110V/1PH/60HZ C/W 15A FUSED DISCONNECT
- NON-LOAD BEARING BACKUP SAFETY NUT ON LIFT SHAFT
- SAFETY HANDRAIL ON CARRIAGE
- ZERO-LOAD START IN BOTTOM POSITION
- SOLID DECK WITH UNDER PLATFORM SAFETY PLATE

<input type="checkbox"/> Accepted as Shown
<input type="checkbox"/> Revise and Resubmit
<input type="checkbox"/> Accepted as Modified
Date: _____
Per: _____

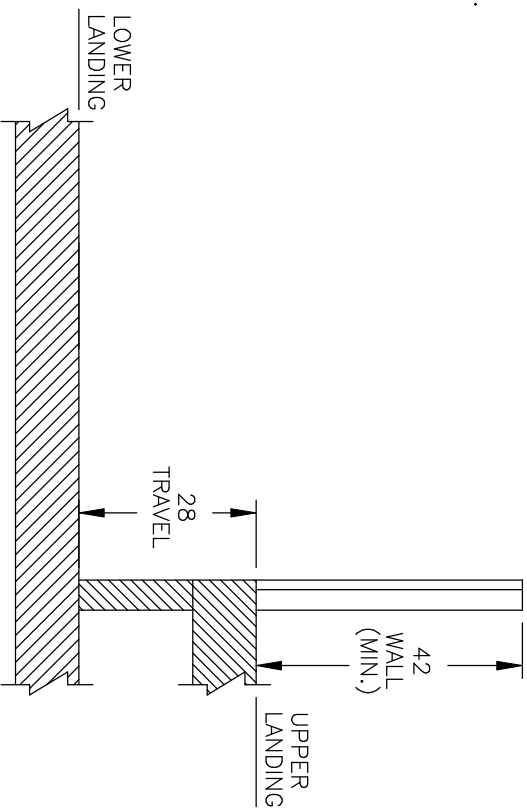
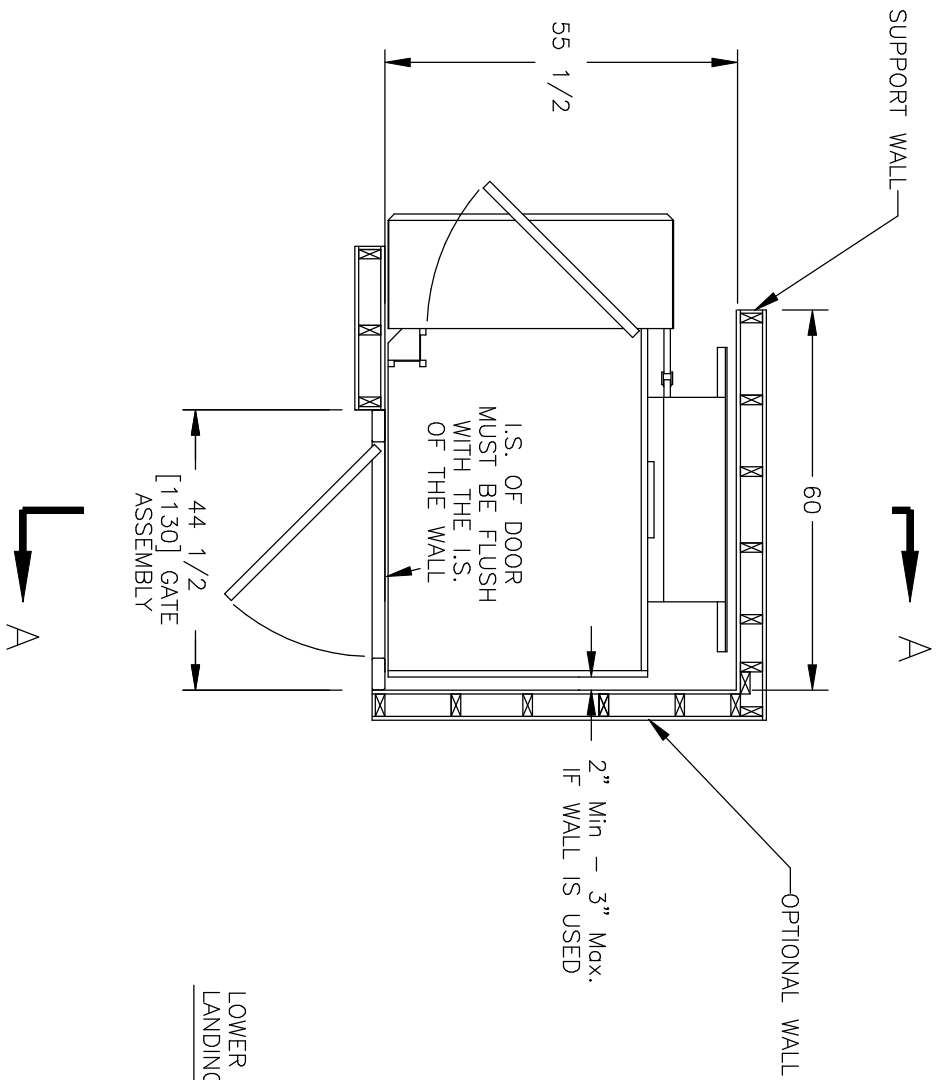
NOTES:

- Dimensions are in inches
- Designed and built to meet CSA B355-94 Safety Code & ASME A17.1 1996 Part XXI Safety Code



DWN. BY: B. HANNAH
 CHECKED BY:
 TRUS-T-LIFT ELEVATOR INSTALLATION DETAILS AND SPECIFICATIONS

SCALE: N.T.S.	DATE: 19/11/04	DRAWING No. 28UCLUGNCA	REV A
---------------	----------------	------------------------	-------



TOTAL TRAVEL	28	INCHES	No. OF LANDINGS	2
LOCATION	UNENCLOSED TRUS-T>LIFT ADJECENT ACCESS WITH CARRIAGE GATE SAMPLE INSTALLATION			
ARCHITECT				
GENERAL CONTRACTOR				
SCALE: N.T.S.		DATE: 19/11/04		DRAWING No. 28UCLUGNCA
CHECKED BY: B. HANNAH		TRUS-T-LIFT ELEVATOR INSTALLATION DETAILS AND SPECIFICATIONS		
DWN. BY:		REV A		



TRUS-T-LIFT ELEVATOR
INSTALLATION DETAILS
AND SPECIFICATIONS