

TRUS-T-LIFT DIMENSIONS


JOB No.	TOTAL	711	INCHES	No. OF	
JOB	TRAVEL	28	mm	LANDINGS	2
LOCATION UNENCLOSED TRUS-T-LIFT SAMPLE DRAWING					
ARCHITECT					
GENERAL CONTRACTOR					

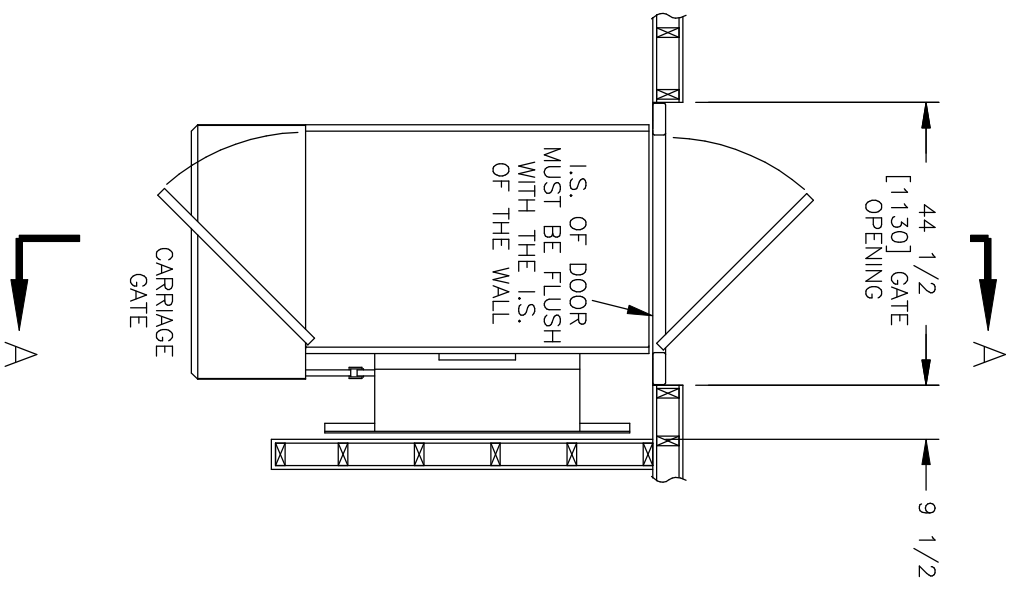
SPECIFICATIONS:

- 34" x 54" [864 mm x 1372 mm] LIFT PLATFORM
- 48" x 54" [1219 mm x 1372 mm] FOOTPRINT
- 48" HEIGHT
- 0" - 28" LIFT RANGE
- MAXIMUM LOAD 550 lbs [250 kg].
- 8 FEET/MINUTE [2.4 METRES/MINUTE] LIFT SPEED
- SCREW NUT WORM GEAR DRIVE
- MOTOR: 1/2 H.P., 110V A.C.
- POWER SUPPLY: 110V/1PH/60HZ C/W 15A FUSED DISCONNECT
- NON-LOAD BEARING BACKUP SAFETY NUT ON LIFT SHAFT
- SAFETY HANDRAIL ON CARRIAGE
- ZERO-LOAD START IN BOTTOM POSITION
- SOLID DECK WITH UNDER PLATFORM SAFETY PLATE

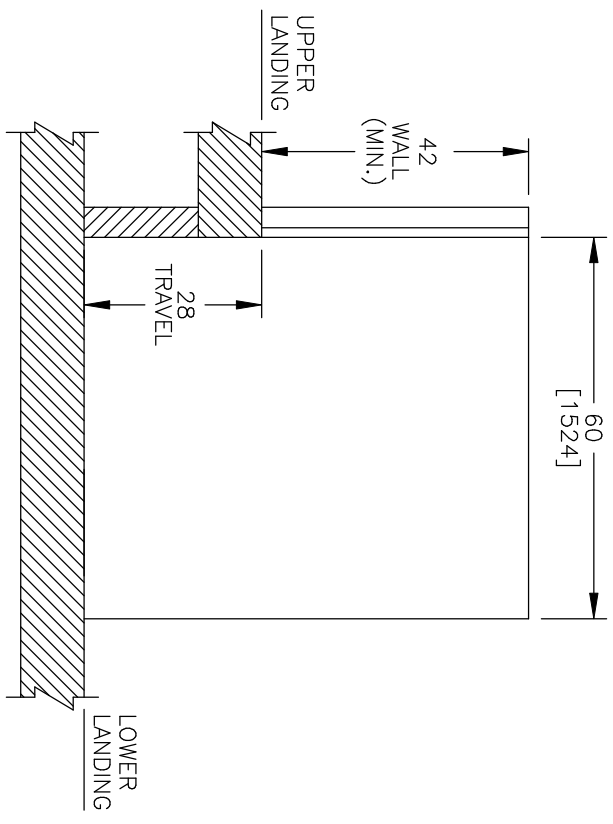
<input type="checkbox"/> Accepted as Shown
<input type="checkbox"/> Revise and Resubmit
<input type="checkbox"/> Accepted as Modified
Date: _____
Per: _____

NOTES:
 - Dimensions are in inches and [mm]
 - Designed and built to meet ASME-A17.1 PART XX Safety Code

DWN. BY:	B.H.		TRUS-T-LIFT ELEVATOR INSTALLATION DETAILS AND SPECIFICATIONS					
CHECKED BY:								
SCALE:	N.T.S.	DATE:	09/02/04	DRAWING No.	28UCRUGNC	REV	1/2	A



PLAN VIEW SECTION




SECTION A-A

JOB No.	TOTAL TRAVEL	711	INCHES	No. OF LANDINGS	2
JOB	TRAVEL	28	mm		

LOCATION UNENCLOSED TRUS-T-LIFT SAMPLE DRAWING

ARCHITECT

GENERAL CONTRACTOR

DWN. BY: B.H.			TRUS-T-LIFT ELEVATOR INSTALLATION DETAILS AND SPECIFICATIONS
CHECKED BY:			

SCALE: N.T.S.	DATE: 09/02/04	DRAWING No. 28UCRUGNC	REV A
---------------	----------------	-----------------------	-------